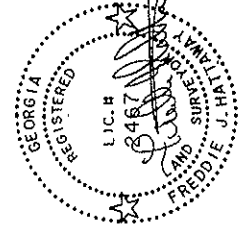
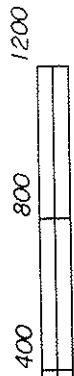


**AREA =
96.64 ACRES**



SOUTHERN S
RONNY BARR
 RT.I., MILAN GA.
 PH. (229) 833-
 S
WALT
 PART

APP
 DAT
 SIGI

REFER.

RAYONIER PROPERTY

JANSSEN PROPERTY

SPARROW PROPERTY

20th LAND DISTRICT

N\F

FRED SMITH, ESTATE

L.L.284

L.L.285

20th LAND DISTRICT

S 45°47'24"W 3104.97'

L.L.285

LAND LOT LINE
 LAND DISTRICT LINE

EVIDENT LINE OF LONG TERM POSSESSION INDICATED BY
 OLD FENCE AND HEDGE ROW WITH OLD BLUE PAINTED TREES

STATE HWY. 230 80' R\W
 N 37°50'20"W 762.85'
 CHORD
 R=2335.16'
 A=679.47'
 N 30°42'21"W 673.11'

S 61°52'34"E
 61.52'

CMF

N 42°55'40"E
 306.33'

N 41°19'44"E
 204.41'

N 42°56'00"E
 353.30'

N 42°47'59"E
 294.34'

N 42°41'27"E
 599.36'

N 44°36'55"E
 349.07'

N 46°57'59"E
 721.64'

CMF

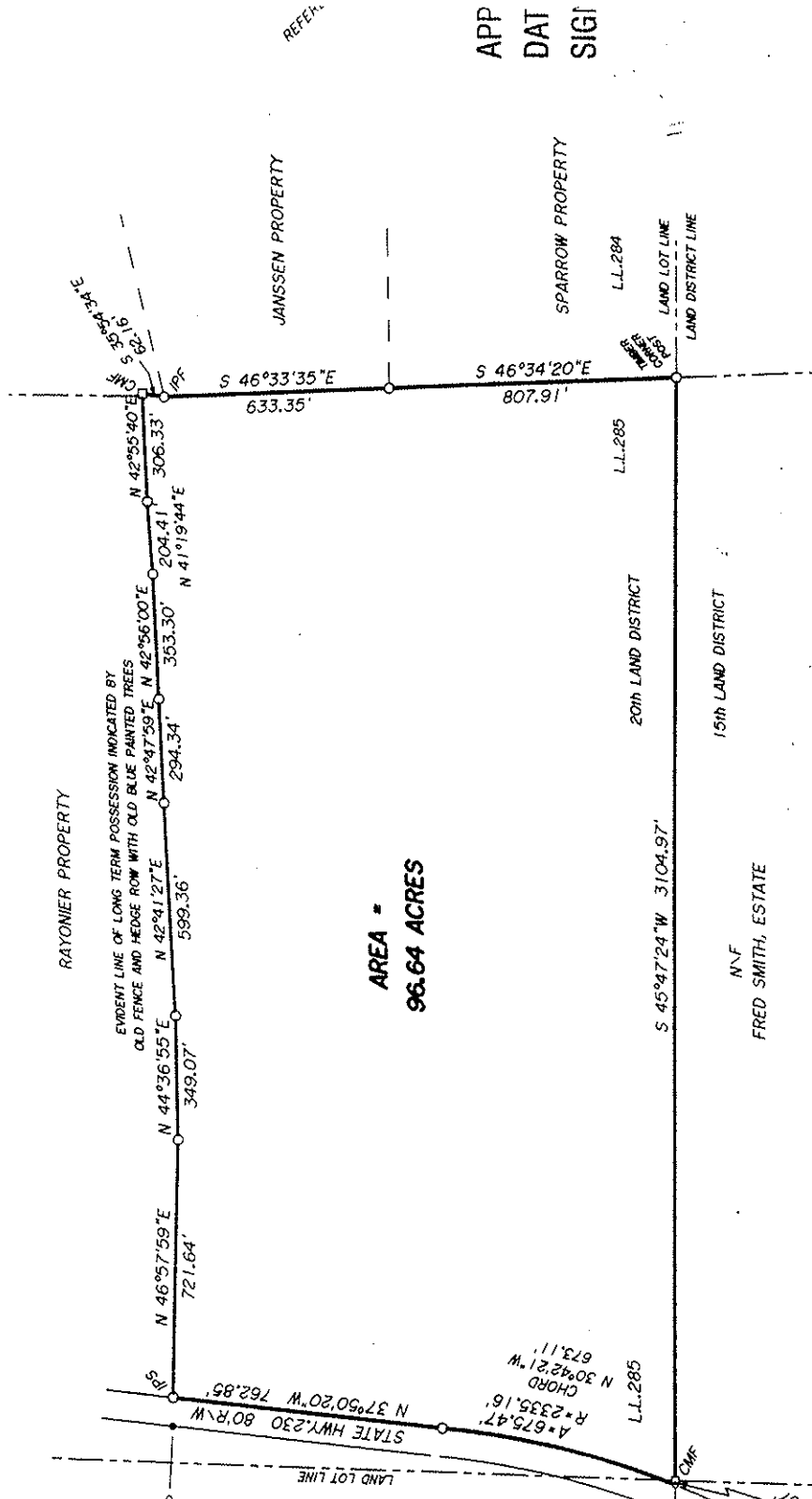
S 46°33'35"E
 633.35'

S 46°34'20"E
 807.91'

CMF

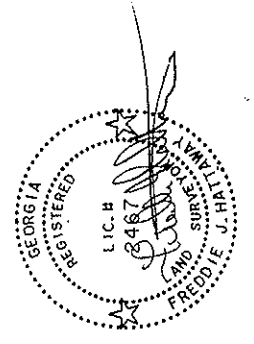
LAND LOT LINE

LAND DISTRICT LINE



SOUTHERN S
RONNY BARR
 RT.L., MILAN GA.
 PH. (229) 833-

S
WALT
 PART



APP
 DAT
 SIGI

REFE